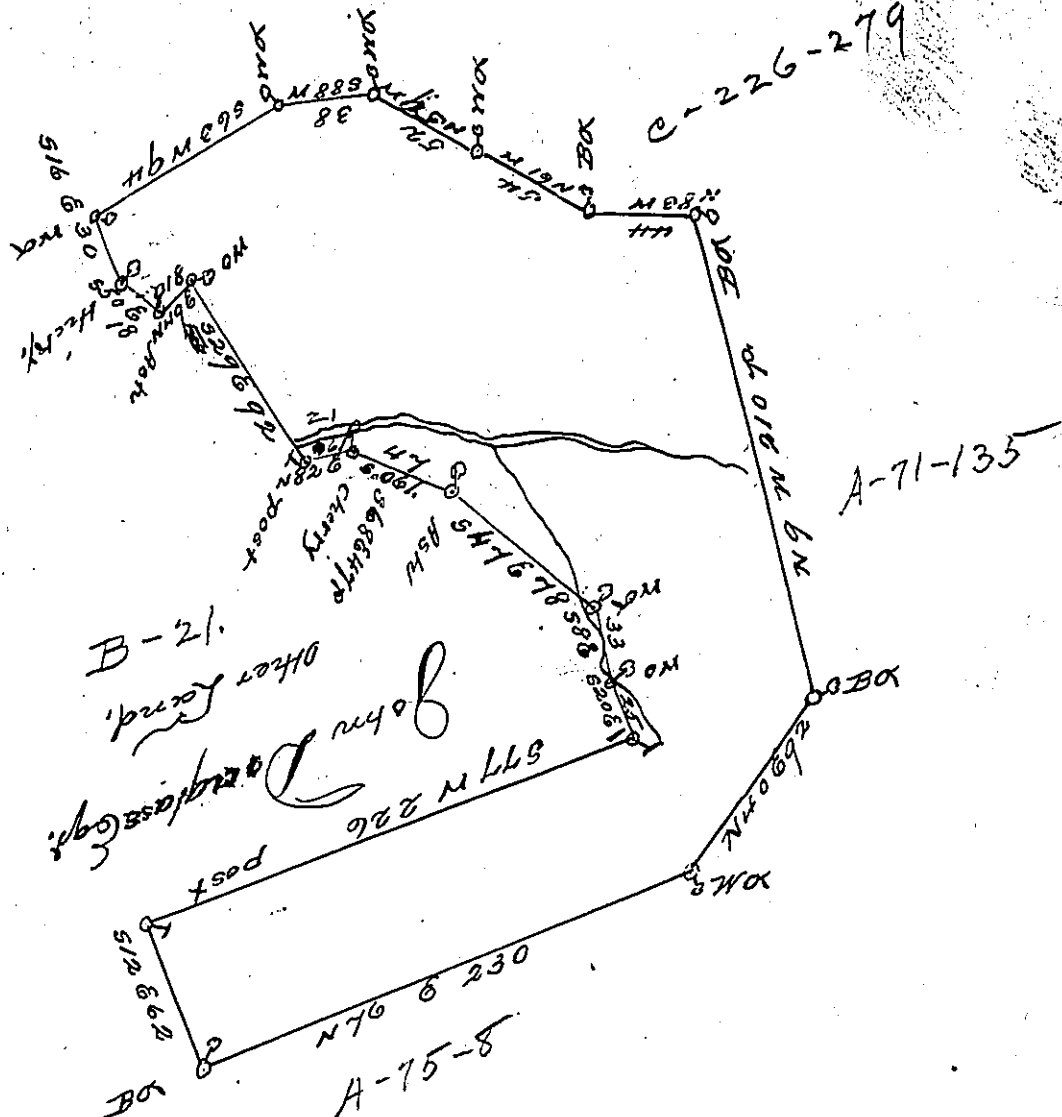


P-3-202
1915



The above is a draught of a Tract of Land situated in Pettus Township Washington County, Survey'd January 12th 1785, in pursuance of a warrant granted to John Douglass Esq. dated November 5th 1784. Containing 330 ^{9/16 ps} acres with 6 per cent allowance for Roads &c.

John Lukeus Esq.
J. L.

David Redick d. J.

IN TESTIMONY that the above is a copy of the original remaining on file in the Department of Internal Affairs of Pennsylvania, made conformably to an Act of Assembly approved the 16th day of February, 1833, I have hereunto set my Hand and caused the Seal of said Department to be affixed at Harrisburg this first day of January, 1901.

James W. Fatta
Secretary of Internal Affairs.